

Notes:
Contractors must verify all dimensions on site before commencing any work or shop drawings. This drawing is not to be scaled. Use figured dimensions only.
Subject to statutory approvals and survey.

AREAS
Building areas are liable to adjustment over the course of the design process due to the ongoing construction detailing developments.

ALL DIMENSIONS TO BE VERIFIED ON SITE

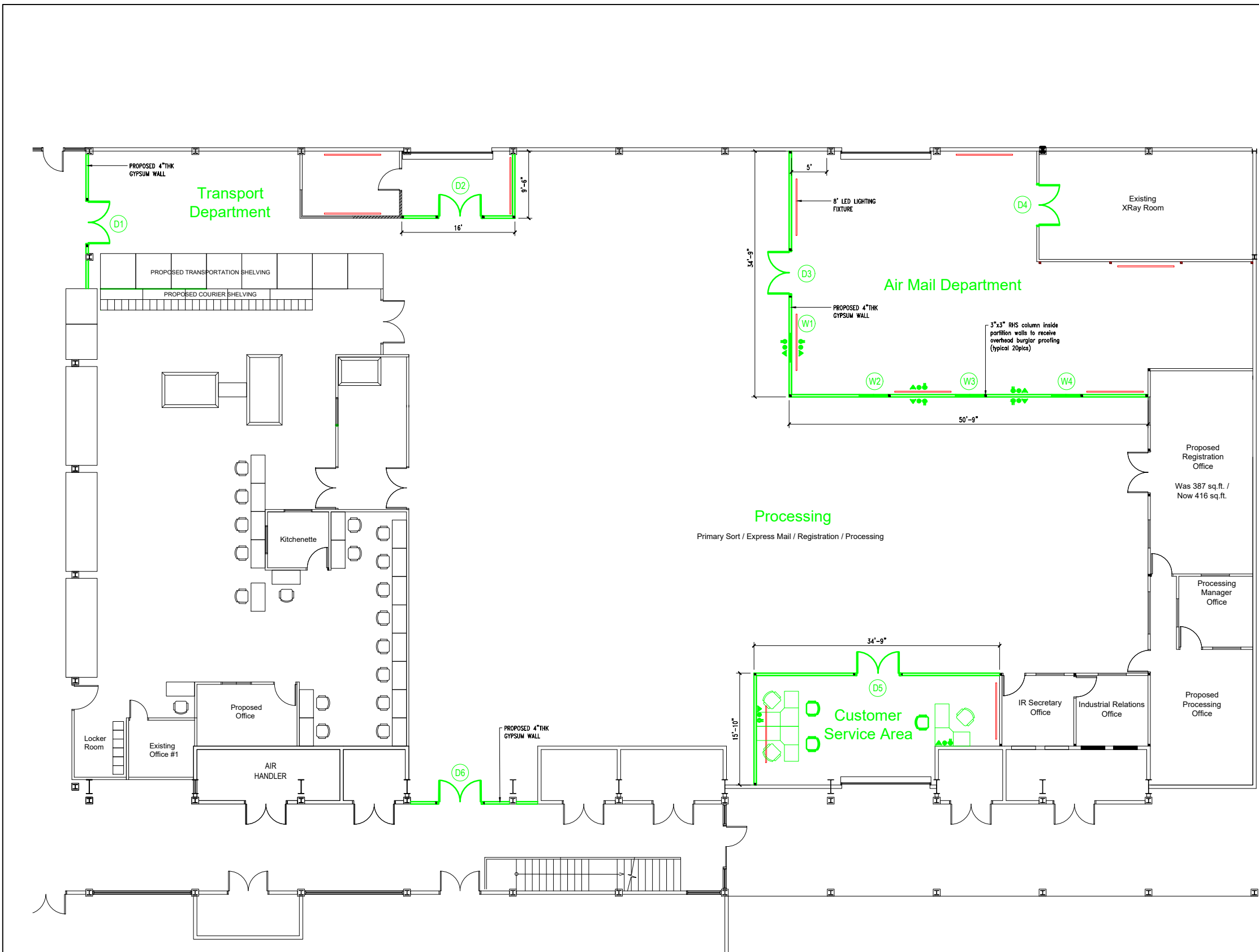
- PROPOSED 4" THK GYPSUM WALL
- 120V SOCKET OUTLET
- 120V ISOLATED GROUND / UPS OUTLET
- IT DATA DROP AND PHONE LINE
- 8' LED LIGHTING FIXTURE

revisions

For Information



Project		S.R. Number	
UPU / NMC Department Enclosure			
Location		National Mail Center	
Drawing Title		Drawing Size ANSI B	
Processing, Transport, Air Mail and Courier Department			
Drawn MD	Date	Scale N.T.S.	Cadfile FILE
Reviewed by	Drawing No.	Rev.	
FP	U01	00	



UPU / NMC Department Enclosure

Approved By :	Title:	Approved By :	Title:	Seen By :	Title:
Approved By :	Title:	Approved By :	Title:	Reviewed By :	Title: